

PANCREATIC CANCER FACTS

Pancreatic cancer is one of the **deadliest** cancers with the **lowest five-year survival rate at just 11%.¹**

- The disease is the **3rd** leading cause of cancer-related deaths in the United States.¹
- By 2030, estimates show that pancreatic cancer will rise to the **2nd leading cause of cancer-related deaths.**²
- In 2022, **an estimated 62,210 Americans will be diagnosed** with pancreatic cancer and **49,830 will die from the disease.**¹

KNOWN RISK FACTORS

- The **cause** of most pancreatic cancer is **unknown**.
- Risk factors for developing pancreatic cancer include:
 - Family history
 - Age
 - Chronic or hereditary pancreatitis
 - Smoking
 - Obesity
 - Long-standing diabetes (five-plus years)

DETECTION

There is **no early detection test** for pancreatic cancer and few effective treatments are available.

TREATMENT OPTIONS

SURGERY is only possible in less than 20% of patients with adenocarcinoma (which accounts for more than 90% of all pancreatic cancers).

RADIATION is sometimes offered before or after surgery and can be combined with chemotherapy.

CHEMOTHERAPY is usually offered when tumors cannot be removed surgically and can be used before and/or after surgery.

CLINICAL TRIALS are an option for eligible pancreatic cancer patients and may offer a patient the best opportunity for a positive outcome.

THE PANCREATIC CANCER ACTION NETWORK (PANCAN)

Our mission is to take bold action to improve the lives of everyone impacted by pancreatic cancer by advancing scientific research, building community, sharing knowledge and advocating for patients. Our vision is to create a world in which all patients with pancreatic cancer will thrive.

SYMPTOMS

Patients with pancreatic cancer **typically experience vague symptoms**, which could also be confused with many other abdominal or gastrointestinal issues.

These symptoms can include:



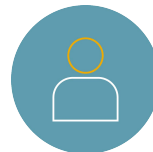
Abdominal and/or mid-to-upper back pain



Weight loss



Nausea/loss of appetite



Jaundice (yellowing of the skin and eyes)



Changes in stool (oily or watery)



New-onset diabetes

1. American Cancer Society. Cancer Facts & Figures 2022. Atlanta: American Cancer Society; 2022.

2. Rahib, et al. Estimated Projection of US Cancer Incidence and Death to 2040. JAMA Netw Open. 2021;4(4):e214708.